

6607122 - 100 tests

PN 4238122-B



For Research Use Only.
Not for use in diagnostic procedures.

SPECIFICITY

IMMU510 recognizes all the $\gamma\delta$ T cells regardless the variable genes or junction regions they express as assessed by flow immunofluorescence studies on polyclonal $\gamma\delta$ T-cell lines as well as $\gamma\delta$ T-cell clones.¹⁻⁵ It has been characterized in reference 1.

It recognizes 1.6 to 8.9% of peripheral CD3 positive lymphocytes from 7 healthy adult donors (data on file at Immunotech S.A.). This antibody works in Western blot techniques: it recognizes the $\gamma\delta$ complex under non-reducing conditions and the isolated δ chain under reducing conditions. This antibody immunoprecipitates the three isoforms of the $\gamma\delta$ T-cell receptor.²

REAGENTS

IOtest TCR $\gamma\delta$ -ECD Conjugated Antibodies

PN 6607122 - 100 tests - 10 μ L/test

CLONE: IMMU510

ISOTYPE: IgG1

IMMUNOGEN: Soluble $\gamma\delta$ T-cell receptor Hybridoma

HYBRIDOMA: P3-X63-Ag.8.653 x BALB/c spleen cells

SOURCE: Ascites fluid

PURIFICATION: Ion exchange or affinity chromatography

CONJUGATION: ECD is conjugated at a Molar Ratio ECD/Ig: 0.5-1.5

Excitation wavelength at 486-575 nm

Emission wavelength at 610-635 nm

BUFFER: 2 mg/ml bovine serum albumin in phosphate-buffered saline containing 0.1% sodium azide

STATEMENT OF WARNINGS

1. This reagent contains 0.1% sodium azide. Sodium azide under acid conditions yields hydrazoic acid, an extremely toxic compound. Azide compounds should be flushed with running water while being discarded. These precautions are recommended to avoid deposits in metal piping in which explosive conditions can develop. If skin or eye contact occurs, wash excessively with water.
2. Specimens, samples and all material coming in contact with them should be handled as if capable of transmitting infection and disposed of with proper precautions.
3. Never pipet by mouth and avoid contact of samples with skin and mucous membranes.
4. Do not use antibody beyond the expiration date on the label.
5. Do not expose reagents to strong light during storage or incubation.
6. Use Good Laboratory Practices (GLP) when handling reagent.

7. Harmful if swallowed.
8. After contact with skin, wash immediately with plenty of water.

STORAGE CONDITIONS AND STABILITY

This reagent is stable up to the expiration date when stored at 2-8°C. Do not freeze. Minimize exposure to light.

REAGENT PREPARATION

No reconstitution is necessary. This monoclonal antibody may be used directly from the vial. Bring reagent to 18-25°C prior to use.

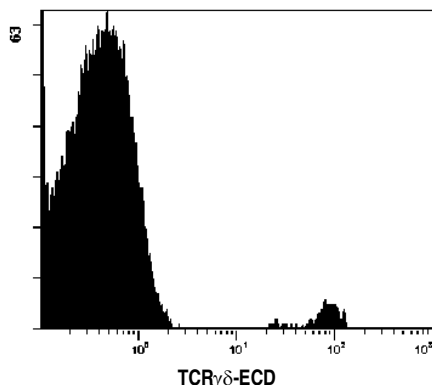
PROCEDURE

This reagent is designed for flow cytometry. Assay volume: 10 μ L per 5 x 10⁵ cells in one test, or per 100 μ L whole blood. A wash is required to yield optimal results.

EXAMPLE DATA

The histogram shown is a monoparametric representation (Count versus Fluorescence Intensity) of lysed normal whole blood sample stained with TCR $\gamma\delta$ -ECD monoclonal antibody (PN 6607122) and gated on lymphocytes.

Figure 1:
Acquisition with a COULTER® EPICS® XL™/XL-MCL™ flow cytometer. Data analysis with Cytomics RXP software.



SELECTED RESEARCH REFERENCES

1. Davodeau, F., Houde, I., Boulot, G., Romagné, F., Necker, A., Canavo, N., Peyrat, M.A., Hallet, M.M., Vie, H., Jacques, Y., Mariuzza, R., Bonneville, M., "Secretion of disulfide linked human TCR $\gamma\delta$ heterodimers", 1993, J. Biol. Chem., 268, 15455-15460.
2. Davodeau, F., Peyrat, M.A., Houde, I., Hallet, M.M., De Libero, G., Vié, H., Bonneville, M., "Surface Expression of two distinct functional antigen receptors on human $\gamma\delta$ T cells", 1993, Science, 260, 1800-1802.
3. Davodeau, F., Peyrat, M.A., Romagné, F., Necker, A., Hallet, M.A., Vié, H., Bonneville, M., "Dual T cell receptor β chain expression on human T lymphocytes", 1995, J. Exp. Med., 181, 1391-1398.
4. Peyrat, M.A., Davodeau, F., Houde, I., Romagné, F., Necker, A., Leget, C., Cervoni, J.P., Cerf-Bensoussan, N., Vié, H., Bonneville, M., Hallet, M.M., "Repertoire analysis of human PBL using a human V δ 3 region specific mAb. Characterization of dual TCR δ chain expressors and α β T cells expressing V δ 3/J α /C α -encoded TCR chains", 1995, J. Immunol., 155, 3060-3067.
5. Thibault, G., Bardos, P., "Compared TCR and CD3 ϵ expression on α β and $\gamma\delta$ cells. Evidence for the association of two TCR heterodimers with three CD3 ϵ chains in the TCR/CD3 complex", 1995, J. Immunol., 154, 3814-3820.

TRADEMARKS

Beckman Coulter Logo, COULTER, EPICS, IOtest, XL and XL-MCL are trademarks of Beckman Coulter, Inc.

For additional information call:
USA 1-800-526-7694
Outside the USA, contact your local Beckman Coulter representative.

Beckman Coulter, Inc.
4300 N. Harbor Blvd.
Fullerton, CA 92835
www.beckmancoulter.com

Printed in USA
Made in USA

© 2002 Beckman Coulter, Inc.
All Rights Reserved.