



*Automated solutions that work smarter.*

BIOMEK® 2000

LABORATORY AUTOMATION WORKSTATION

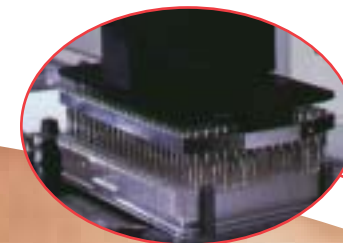


*One instrument - unlimited solutions.*

The rapidly changing demands on life science technology call for Smart Solutions™. With these rapid changes, one constant remains: the power of the individual mind. It is these independent thinkers who define Beckman Coulter's purpose in life science research. By simplifying the discovery process we make it easier for you to simply discover. That's why our Biomek® 2000 Laboratory Automation Workstation integrates all liquid handling operations into one automated system. Allowing you to perform time-consuming, repetitive tasks in less time and with more flexibility to meet all your sample preparation and assay requirements. No wonder it's the benchmark biorobotics solution that works for pharmaceutical, genomic and bioresearch laboratories worldwide.

### *Accelerated screening and profiling*

*Library screening and expression profiling are faster than ever using the High-Density Replication System to generate arrays.*



### *Rapid bioassay development.*

*AAO (Automated Assay Optimization) software is so intelligent, you can rapidly develop robust, cost-effective bioassays from the bench to HTS formats.*



### *Smart Solutions™*

*Beckman Coulter, in collaboration with a number of providers, sells and supports hardware, software, chemistry kits and methods for a variety of applications. All elements are validated together to ensure optimum performance.*

### *Nucleic acid preparation.*

*An array of applications have been adapted into high-throughput, walk-away solutions that meet your ever-changing needs, including: plasmid preparation with Promega Wizard® SV 96 and Promega Wizard MagneSil®; PCR<sup>†</sup> and sequencing reaction cleanup with Promega Wizard MagneSil; genomic DNA blood extraction with Xtra Amp® from Xtrana; and methods for sequencing and PCR reaction setup.*



### *Application details online.*

*Discover more Smart Solutions in our eLabNotebook. Find fully qualified methods for many time-consuming applications—from plasmid prep to cell-based assays—on this expanding web-based resource.*

## *Building solutions.*

Rapid adaptation is essential in today's life sciences environment. We're staying one step ahead so you can work smarter, not harder. That's why we're building solutions with a wide variety of reagents and labware accessories. From managing combinatorial libraries to nucleic acid purification, the Biomek 2000 delivers high-capacity performance to simplify your research. Plus all the training and technical support you need to accelerate it.

### *High capacity.*

*The Stacker Carousel increases capacity and walk-away performance for all applications—from drug screening to genetic analysis.*

### *Multiple choices.*

*The breadth and depth of Biomek accessories make it easy to fill all your life science needs. Choose from this vast assortment of Seal & Sample aluminum foil lids; disposable pipette tips, multiwell plates and reagent reservoirs; plus a variety of interchangeable tools.*

### *Integrated plate reading.*

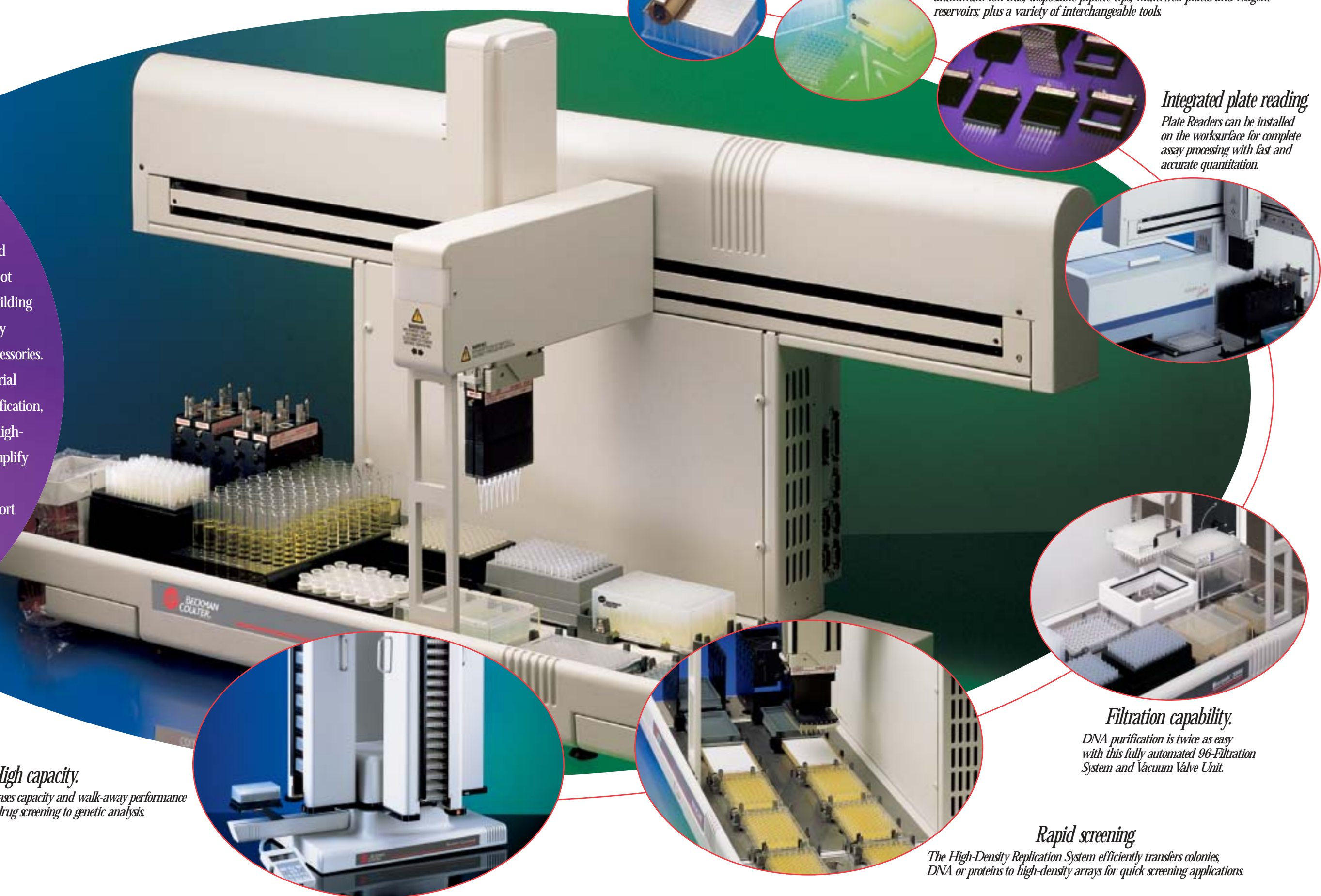
*Plate Readers can be installed on the worksurface for complete assay processing with fast and accurate quantitation.*

### *Filtration capability.*

*DNA purification is twice as easy with this fully automated 96-Filtration System and Vacuum Valve Unit.*

### *Rapid screening.*

*The High-Density Replication System efficiently transfers colonies, DNA or proteins to high-density arrays for quick screening applications.*



# Powerful BioWorks software.

## Method generation.

Create custom definitions to match your labware requirements and test generated methods in the run module to optimize timing and performance of your protocol.

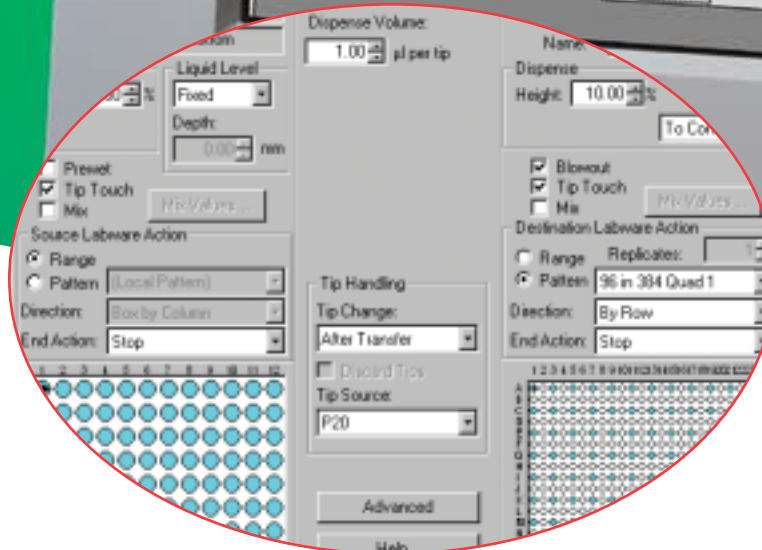
## Point and click functions.

Specifying steps in automation processes, such as pipetting parameters and plate movement, is fast and easy with the icon-based Function Palette.

You're facing growing pressure to produce more with less resources. Our solution: put the power of simplicity at your fingertips. With Windows<sup>®</sup>-based BioWorks<sup>™</sup> software, all it takes is the click of a mouse to set up, edit and run even the most complex applications on our Biomek 2000. Point-and-click operations quickly direct you through graphic screens that configure methods to exact requirements. Once methods are generated, they're automatically stored for future use. Just point, click, and every detailed command is executed with precise reproducibility and error-free performance.

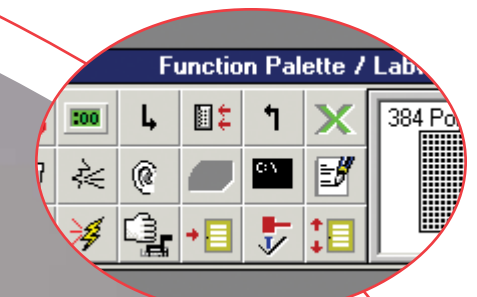
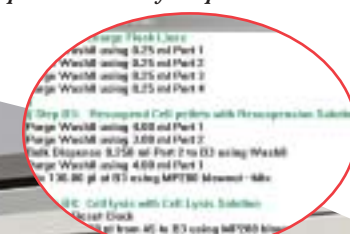
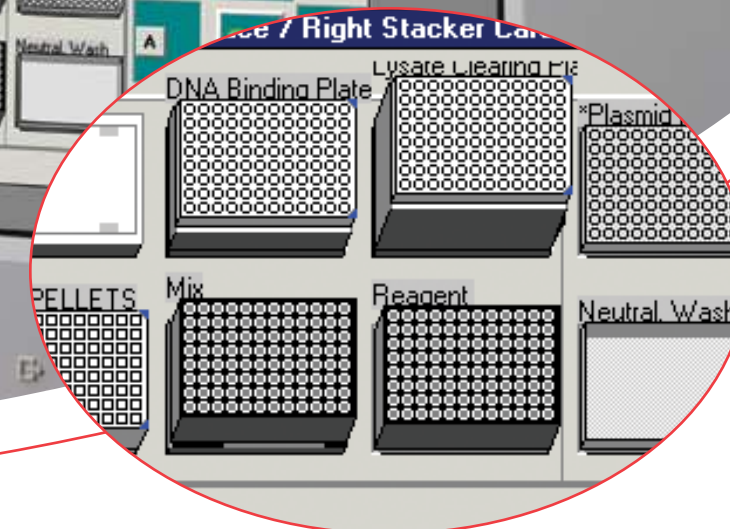
## Precision pipetting

Select the pipetting parameters for your application with ease.



## Easy deck setup.

Select plates to move or pipette by clicking on the graphical representation of the Biomek 2000 worksurface.



## Biomek® 2000 Specifications

### Workstation

Weight	80 lb. (36 kg)
Height	26.5 in. (67 cm)
Width	48 in. (122 cm)
Depth	19.5 in. (50 cm)
Power Requirements	50/60 Hz, 100-240V

### Biomek 2000 Controller

Pentium<sup>®</sup>-based Windows NT Controller or better

### Communication Ports

Seven Ports Four open; three reserved

### Interchangeable Tools

Pipette Tools	Nom. Volume Range	Max. Reach
P20 Single-Tip Tool	1-20 µL	100 mm
P200L Single-Tip Tool	5-200 µL	100 mm
P1000L Single-Tip Tool	50-1000 µL	100 mm
MP20 Eight-Tip Tool	1-20 µL	50 mm
MP200 Eight-Tip Tool	5-200 µL	50 mm
Wash Tools	Volume Range	Max. Reach
Wash-1 Single-Channel Tool	1 x 50 µL to 1 x 150 mL	40 mm
Wash-8 Eight-Channel Tool	8 x 50 µL to 8 x 18.75 mL	40 mm
HDR Tool	Pin Diameter	Nom. Sample Density
96/384-Pin HDRT	0.015/0.045 in.	3,456/1,536
Gripper Tool		

Used to move labware and devices around the Biomek worksurface to fully automate filtration-based processes such as nucleic acid purification, and provide access to integrated plate readers.

### Other Biomek Accessories

#### Stacker Carousel

Provides external supply and storage of labware, thereby increasing capacity and walk-away operation of the Biomek 2000 for all applications.

#### 96-Filtration Systems

Filtration manifold system includes a vacuum manifold with interchangeable collars for fully-automated filtration processes on the Biomek workstation.

#### Thermal Exchange Unit (TEU)

Heats or cools (0°-50°C) reservoirs, plates, or other standard labware. Refrigerated or heated liquids are circulated through the TEU by an external user-supplied circulator bath.

#### Orbital Shaker

Shaker utilized for resuspension of MagneSil<sup>®</sup> paramagnetic beads and assays requiring plate agitation.

\* Wizard is a registered trademark and MagneSil is a trademark of Promega Corporation. \*\*Xtra Amp is a trademark of Xtrana, Inc.

† All trademarks are the property of their respective owners.



*Developing innovative solutions in genetic analysis, drug discovery, and instrument systems*

**Innovate** SIMPLIFY **Automate**

Beckman Coulter, Inc. • 4300 N. Harbor Boulevard, Box 3100 • Fullerton, California 92834-3100  
Sales: 1-800-742-2345 • Service: 1-800-551-1150 • Telex: 678413 • Fax: 1-800-643-4366 • www.beckmancoulter.com

#### Worldwide Life Science Research Division Offices:

Australia (61) 2 9844-6000 Canada (905) 819-1234 China (86) 10 6515 6028 Eastern Europe, Middle East, Africa (41) 22 994 07 07  
France 01 49 90 90 00 Germany (89) 35870-0 Hong Kong (852) 2814 7431/2814 0481 Italy 02-953921 Japan 03-5404-8359  
Mexico 525-605-77-70 Netherlands 0297-230630 Singapore (65) 339 3633 South Africa (27) 11-805-2014/5 Spain (34) 91 3836080  
Sweden 08-564 85 900 Switzerland 0800 850 810 Taiwan (886) 2 2378 3456 Turkey 90 216 309 1900 U.K. 01494 441181 U.S.A. 1-800-742-2345

B2001-4571-CB-XX

© 2001 Beckman Coulter, Inc.

Printed in U.S.A. on recycled paper.