



#### LABORATORY QUALITY COMES FIRST

THYMED's state-of-the-art laboratories meet all of today's safety and regulatory requirements. The facilities are approved for working with category S1 and S2 materials and include suites for molecular immunology, cell culture and virology, and antibody and cell-based immunoassays. For sample preparation and storage, the facilities include laboratories for extensive cell preparation, cryopreservation and long-term sample storage.

All assays at THYMED are performed in accordance with good laboratories practices (GLP). Detailed standard operating procedures (SOPs) exist for all assays, test systems, data management and logistics. THYMED is an active member of the Clinical Laboratory Standards Institute (CLSI) and all assays are performed in accordance to stringent CLSI guidelines. THYMED is currently pursuing ISO certification.



**Worldwide Headquarters**  
Beckman Coulter, Inc.  
4300 N. Harbor Boulevard  
P.O. Box 3100  
Fullerton, CA 92834-3100 USA  
Tel: (800) 742-2345  
FAX: (800) 643-4366  
[www.beckmancoulter.com/immunomics](http://www.beckmancoulter.com/immunomics)



THYMED GmbH  
Kupferbergterrasse 17-19  
D-55116 Mainz  
Germany

phone: +49-(0)61 31-21 65 20  
fax: +49-(0)61 31-2 16 52 10  
email: [info@thymed.com](mailto:info@thymed.com)

visit our website at [www.thymed.com](http://www.thymed.com)

B2004-6308 DG-5K



## Visualize immunity

PARTNERING  
TO CREATE A  
NEW PARADIGM  
IN IMMUNE  
MONITORING





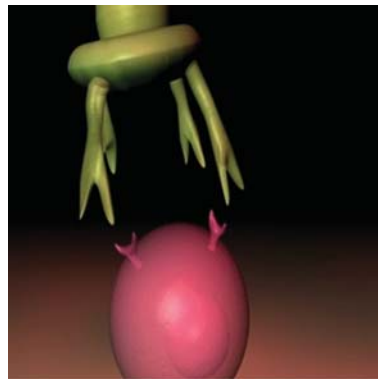
**COMPREHENSIVE IMMUNE  
MONITORING SERVICES  
IN DRUG DEVELOPMENT**

Pharmaceutical and biotechnology companies developing new drugs, vaccines and therapeutics often require specialty testing services combined with professional consulting to enable accurate and timely decisions. In today's highly competitive and regulatory-driven environment, demands for a standardized approach to testing are of utmost importance. That's why THYMED and Beckman Coulter are creating a new paradigm in immune monitoring.

**EXPERTS IN IMMUNE MONITORING**

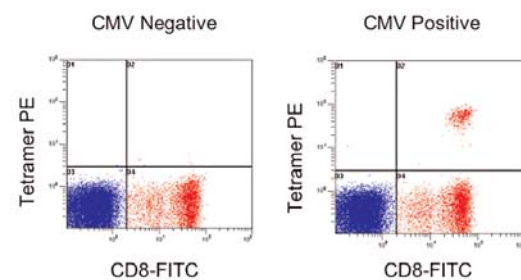
THYMED GmbH, founded in April 2003 and representing in excess of 30 cumulative years of immune monitoring and diagnostic experience, was formed in response to numerous requests to perform immunological monitoring of clinical trials. In a short time, THYMED has successfully provided services to large and small pharmaceutical and biotech companies in the USA and Europe.

THYMED's comprehensive immune monitoring and consultation services are customized to meet each company's specific project needs. These services include protein design and assessment, immune response and immune status evaluation.

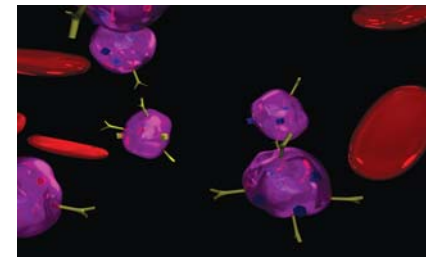


**Tetramer Technology Profile by  
THYMED and Beckman Coulter**

iTAg™ MHC Tetramer/Peptide Complex



Ex Vivo Detection of Antigen-Specific T Cells

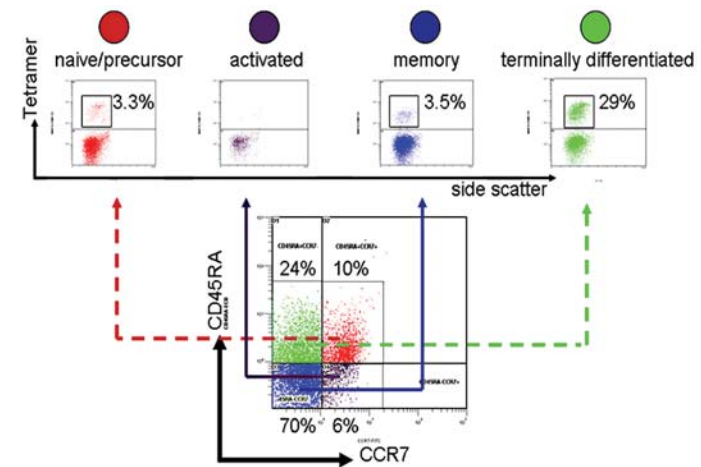


**SHARING A COMMON MISSION  
IN IMMUNE MONITORING**

In 2003, THYMED and Beckman Coulter, Inc. entered into a strategic partnership to

facilitate access to state-of-the-art technologies and novel applications, often providing THYMED early access prior to commercialization. This relationship gives THYMED immediate access to innovative new techniques and approaches in immune monitoring and immune profiling.

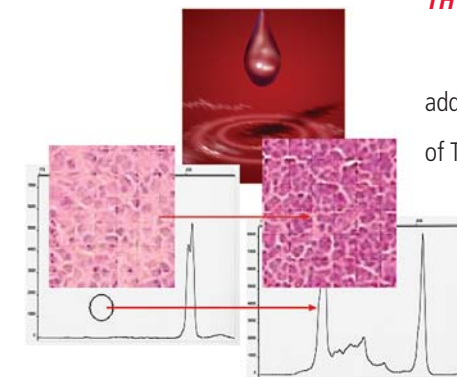
**TRACKING IMMUNE RESPONSES: FLOW CYTOMETRY**



**TREC Technology Profile by  
THYMED and Beckman Coulter**

THYMED continually evaluates and adds additional assays to their services, such as analysis of T cell repopulation by TREC analysis. The TREC assay provides critical information following immunotherapy, antiviral therapy, transplantation or chemotherapy. TREC detects T cell receptor excision circles and thymic and extrathymic T cell repopulation.

THYMED utilizes the Beckman Coulter CEQ™ Genetic Analysis System to perform the TREC assay.



**iTopia™  
Technology  
Profile by  
THYMED and  
Beckman Coulter**

THYMED is the exclusive service provider of Beckman Coulter's iTopia™ Epitope Discovery system. iTopia can predict immune response in vaccine and immunotherapeutic characterization and design by identifying and mapping immunogenic T cell epitopes.

**APPLICATIONS**

- iTAg™ Tetramer analysis
- iTopia™ Epitope Discovery
- A2® Multiplex immune profiling
- Absolute counts of immune cells
- Immune marker analysis
- Functional tests: proliferation, cytokine production
- ELISPOT
- Molecular composition of the immune system
- T cell receptor fingerprinting
- T cell repopulation: TRECs
- T cell cloning
- Definition of antigens recognized by T and B cells: SEREX analysis
- Cloning of T cell receptors / control cell lines
- Immunohistology
- Tetramer-in-situ-staining
- Antigen-profiling
- Peptide Microarray
- Kinase Profiling