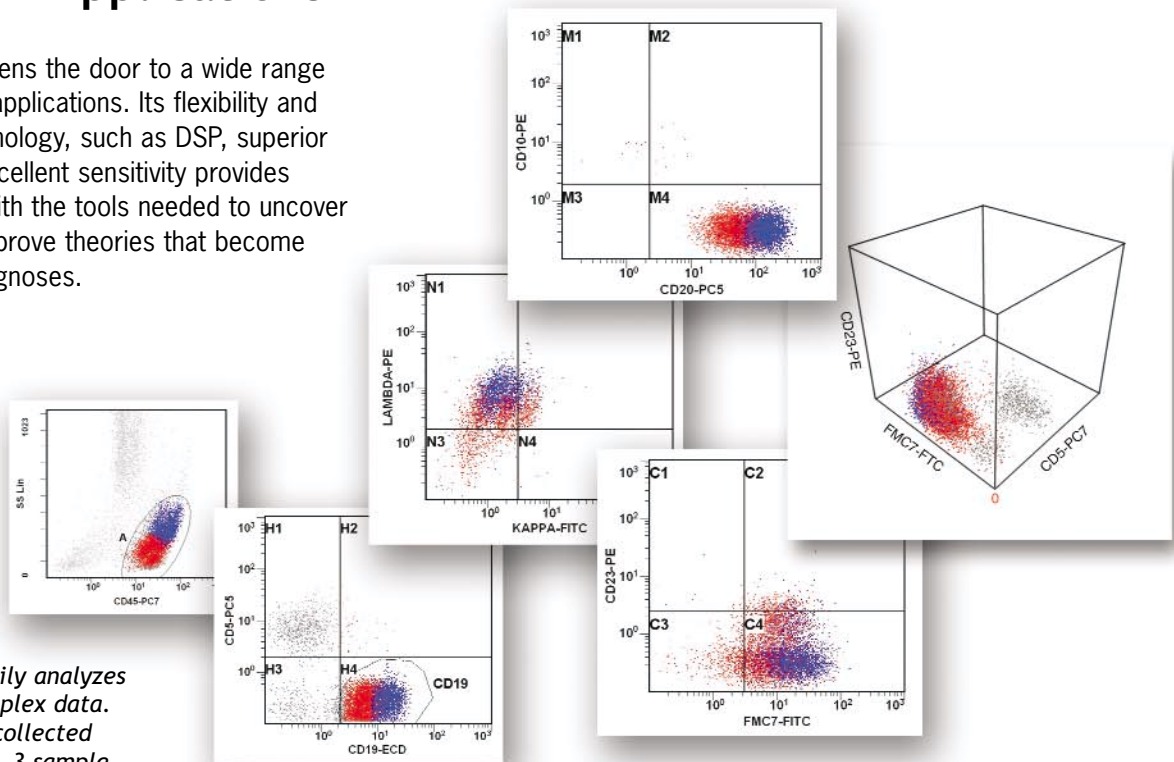
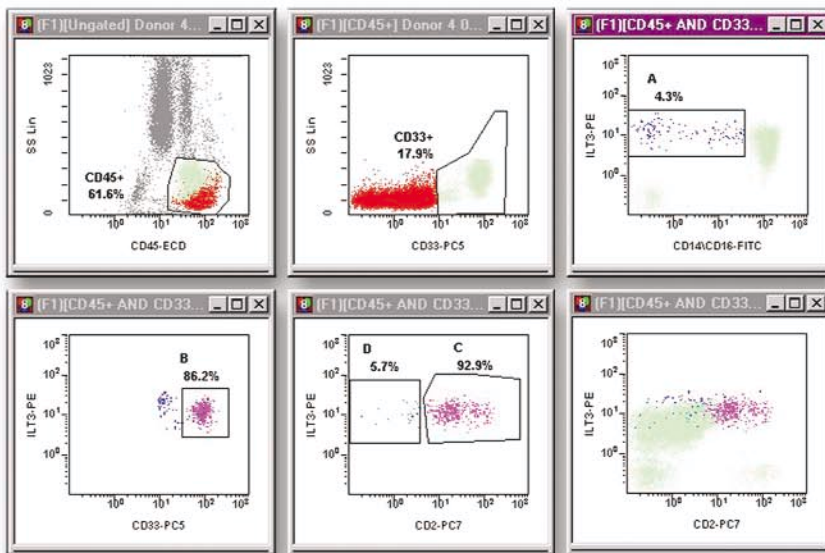
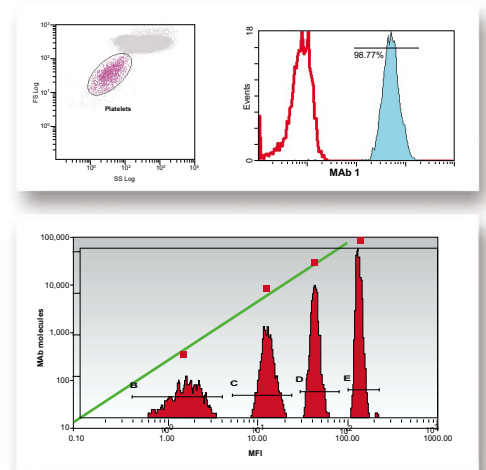


# Superior Data Using Advanced Research Applications

The FC 500 opens the door to a wide range of specialized applications. Its flexibility and advanced technology, such as DSP, superior linearity and excellent sensitivity provides investigators with the tools needed to uncover mysteries and prove theories that become tomorrow's diagnoses.



The FC 500 easily analyzes multicolor complex data. This data was collected using one laser, 3 sample tubes, 5 colors and 9 surface markers, including a CD45 gating strategy. Analysis tools in RXP software, such as the Tomogram and Surface plots, can resolve populations and help identify intensity shifts. IOTest antibodies plus PC5 & PC7 drop-in reagents, combined with the FC 500 Auto Setup Wizard offer a simple solution to five-color phenotyping.



Dendritic Cells play an important role in the regulation of immunity. They are involved in a number of disorders such as infectious diseases, cancer, autoimmunity and allergy. Using the following IOTest monoclonal antibodies, five-color analysis allows exceptional Dendritic Cell analysis: CD (14+16)-FITC, CD85k(ILT3)-PE, CD45-ECD, CD33-PC5, CD2-PC7.\*

Above: GPIIb/IIIa platelet occupancy assay results. The scatter plot shows excellent resolution for platelet studies. The calibration particles and Excel graph represent the FC500's ability to easily perform quantitation applications. The actual calibration particles are shown as the map to the Excel quantitation curve.\*

\* For Research Use Only. Not for use in diagnostic procedures.