

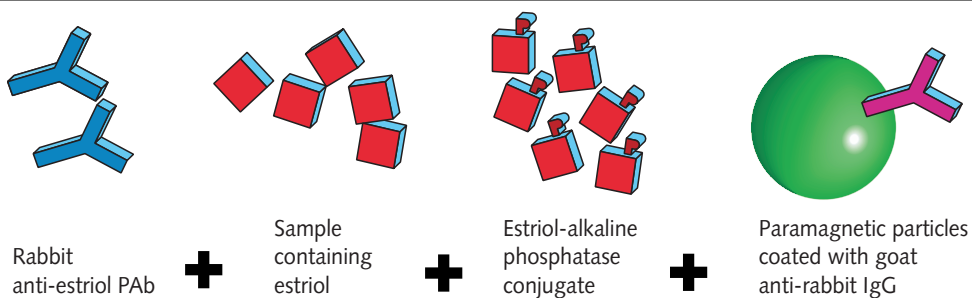


**Access**  
Reproductive

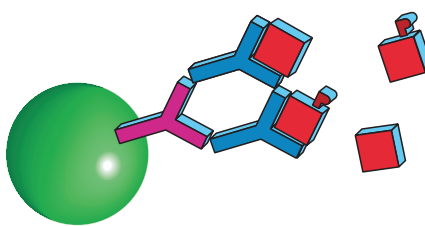
# Unconjugated Estriol

- *Excellent precision*
- *Analytical sensitivity of 0.017 ng/mL*
- *Calibration stability: 28 days*
- *Calibration comparable to current RIA methods*

## 1 step competitive binding technique

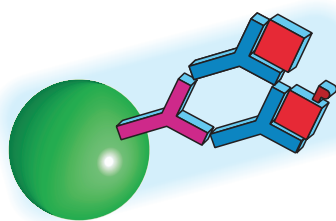


Mix and incubate at 36.5°C for 20 minutes



Competitive binding

Wash 3 times



+ Add substrate

→ Incubate 5 minutes

Dioxetane-P → Dioxetane

Read light

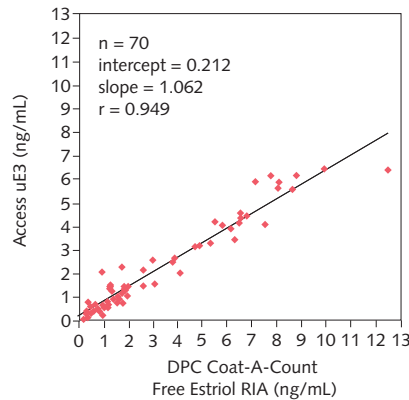
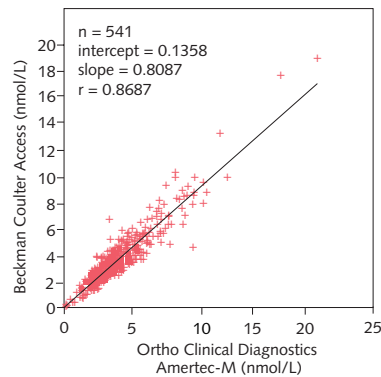
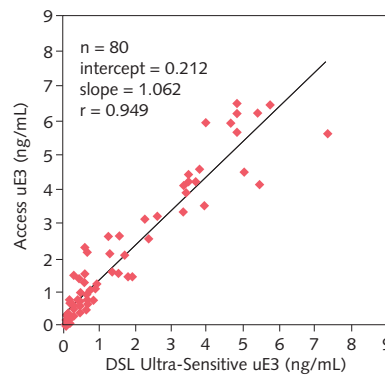
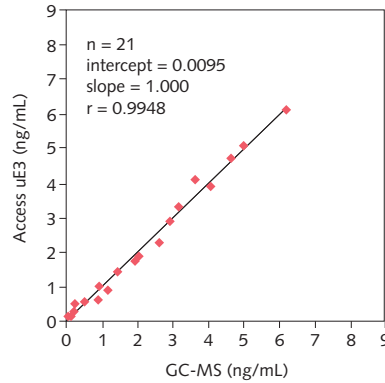
**Signal produced is inversely proportional to the unconjugated estriol concentration in the sample**



# Unconjugated Estriol

**Method Comparison** – The Access Unconjugated Estriol assay was standardized for the correlation of patient values to GC-MS (Gas Chromatography – Mass Spectroscopy). Other comparisons were evaluated using human serum samples versus three commercially available methods. The comparisons between the methods were analyzed by linear regression using Deming calculations.

## Performance



## Characteristics

Sample Type/Size	Serum/25 $\mu\text{L}$
Time to 1st Result	30 minutes
Analytical Sensitivity	0.017 ng/mL
Approximate Calibrator Levels	0, 0.07, 0.17, 0.34, 0.86, 3.4 and 6.9 ng/mL
Expected range	See insert
Open Pack Stability	28 days
Calibration Stability	28 days

## Ordering Information

Access® Unconjugated Estriol – 2 packs of 50 tests/pack	33570
Access® Unconjugated Estriol Calibrators – 1 vial of 4.0 mL, 6 vials of 2.6 mL/vial	33575



Africa/Middle East/Eastern Europe: Switzerland, Nyon (41) 22 994 0707. Australia, Gladesville (61) 2 9844 6000. Canada, Mississauga (1) 905 819 1234. China, Beijing (86) 10 6515 6028. Hong Kong (852) 2814 7431, 2814 0481. France, Villepinte (33) 1 49 90 90 00. Germany, Krefeld (49) 2151 33 35. Italy, Milan (39) 02 953921. Japan, Tokyo (81) 3 5404 8424. Latin America (305) 380 4709. Mexico, Mexico City (525) 575 6805. Netherlands, Mijdrecht (31) 297 230630. Singapore (65) 339 3633. South Africa, Johannesburg (27) 11 805 2014. Spain, Madrid (34) 91 728 7900. Sweden, Bromma (46) 8 98 53 20. Switzerland, Nyon 0800 850 810. Taiwan, Taipei (886) 2 2378 3456. UK, High Wycombe (44) 01494 441181. USA, Brea, CA 800 352 3433 714 993 5321.